

# Taurus Series Multimedia Players

V1.6.4



Quick Start Guide

## Contents

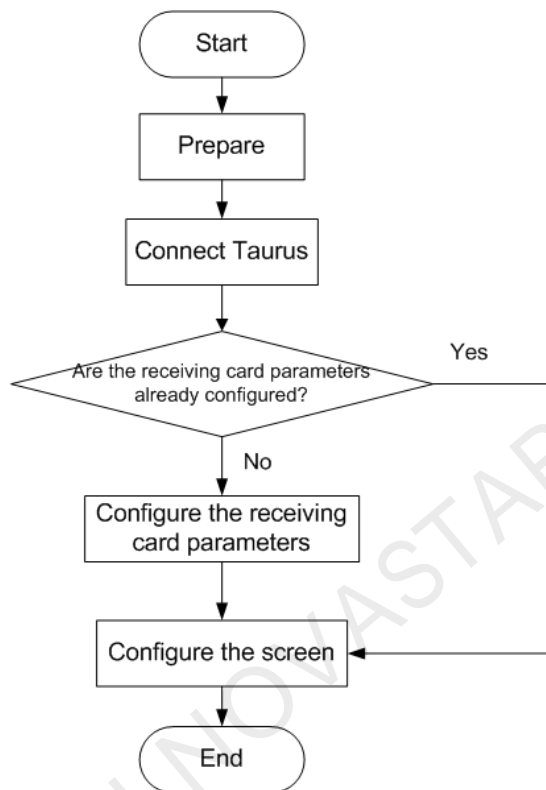
Contents.....	i
1 Overview .....	1
1.1 Scenario.....	1
1.2 Procedure .....	1
2 Preparation.....	2
2.1 Installing Software.....	2
2.2 Getting Accounts.....	2
3 Taurus Connections.....	3
4 Receiving Card Parameter Configuration.....	4
4.1 Loading Configuration File or Configuring the Parameters Manually with NovaLCT .....	4
4.2 Loading the Configuration File with ViPlex Handy .....	5
5 Screen Configuration.....	6
6 General Operations.....	7
6.1 Taurus Login with ViPlex Handy (Android and iOS) .....	7
6.2 Taurus Login with ViPlex Express (Windows) .....	7
7 Caution.....	9

# 1 Overview

## 1.1 Scenario

This document introduces a quick way to use Taurus series multimedia players and provides instructions for the first-timer.

## 1.2 Procedure




## 2 Preparation

### 2.1 Installing Software

Get and install the software in [Table 2-1](#). The installation is the same as the installation of common software.

Table 2-1 Required software

Name	Type	Description	Address
ViPlex Handy	Mobile client	LAN-based screen management software for Android and iOS, which is mainly used for screen management, solution editing and publishing.	
ViPlex Express	PC client	LAN-based screen management software for Windows, which is mainly used for screen management, solution editing and publishing.	<a href="https://www.vnnox.com/download?l=en">https://www.vnnox.com/download?l=en</a>
NovaLCT	PC client	LED configuration tool for Windows only, which is mainly used for screen configuration and adjust screen to the optimal display performance.	<a href="http://www.novastar.tech">www.novastar.tech</a>

### 2.2 Getting Accounts

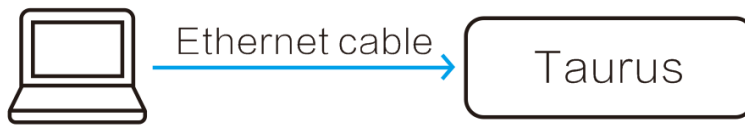
Please obtain the actual values of the information shown in [Table 2-2](#). You are advised to change the default password to improve information security.

Table 2-2 Required information

Type	Default Name	Default Password
Connect to the Wi-Fi AP of Taurus	AP name: AP+ <i>Last 8 digits of the SN</i> Example: AP10000033	12345678
Log in to Taurus	User name: admin	123456

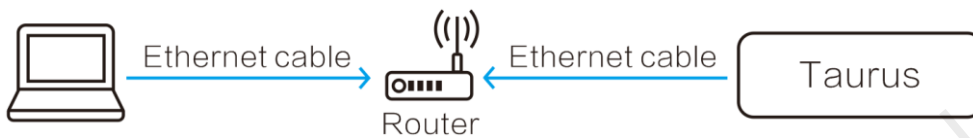
### 3 Taurus Connections

#### Ethernet Cable



Required configuration: In ViPlex Express, enable DHCP service.

#### LAN



No configuration required.

#### Wi-Fi AP

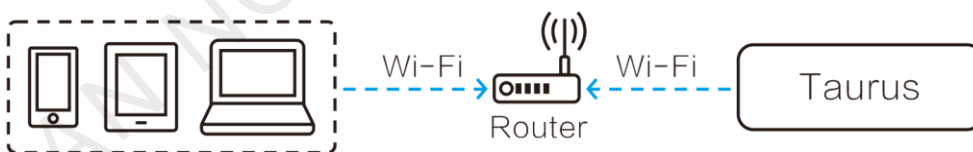
Taurus series products are designed with Wi-Fi AP. The Wi-Fi working frequency range is 2400 MHz to 2483.5MHz.



No configuration required.

#### Wireless LAN

T3/T6/TB3/TB6/TB8 support Wi-Fi Sta and can use this connection method.



Required configuration: Use ViPlex software to log in to the terminal and connect it to the Wi-Fi AP of the router.

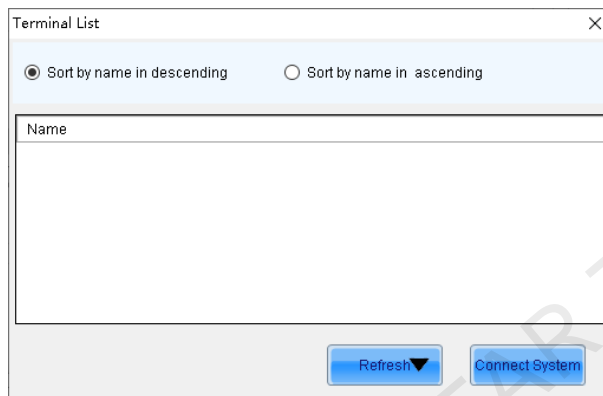
## 4 Receiving Card Parameter Configuration

If receiving card parameters are already configured, please skip this chapter and perform the operations in [5 Screen Configuration](#).


### 4.1 Loading Configuration File or Configuring the Parameters Manually with NovaLCT

- Step 1 Open NovaLCT.
- Step 2 On the menu bar, choose **User > Media Player Login**.
- Step 3 In the **Terminal List** dialog box, click **Refresh**.

Figure 4-1 Terminal list



- Step 4 Select a multimedia player from the list and click **Connect System**.

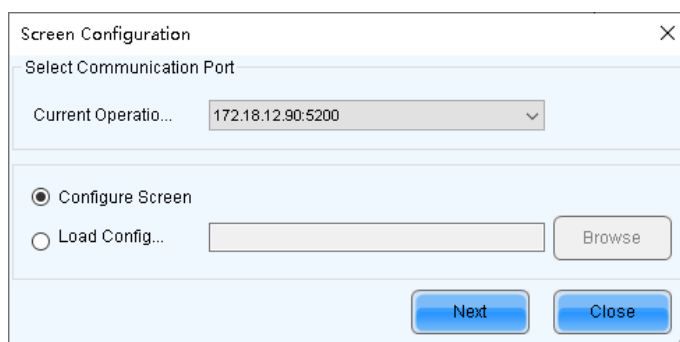
If the terminal and NovaLCT are not on the same network segment but they can be pinged, click  next to **Refresh**, select **Specify IP**, enter an IP address and click **Search**.

- Step 5 Enter the user name and password, and then click **OK**.

The default user name and password are "admin" and "123456", respectively.

- Step 6 Click  or choose **Settings > Screen Configuration** on the menu bar to open the dialog box shown in [Figure 4-2](#).

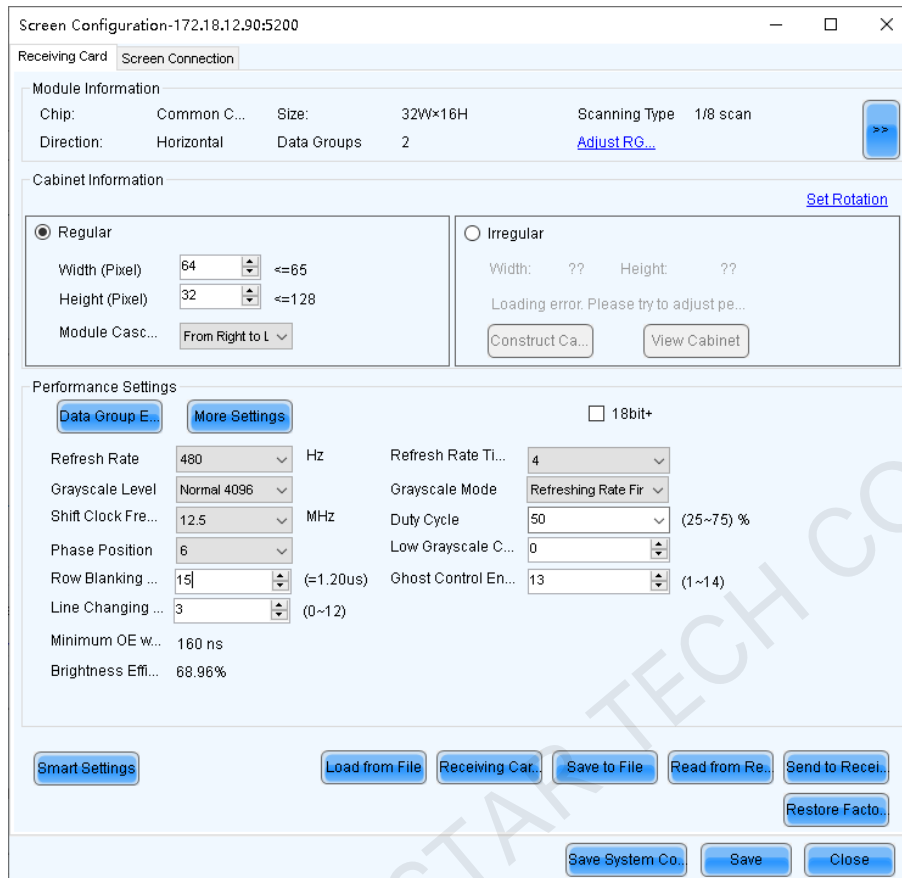
Figure 4-2 Screen configuration method



Step 7 Select Configure Screen and click Next.

Step 8 On the Screen Configuration page, select the Receiving Card tab.

Figure 4-3 Screen configuration



Step 9 Perform any of the following operations as required to configure receiving card parameters.

- Load a receiving card configuration file  
Click **Load Configuration File** to choose a configuration file from your PC.
- Configure receiving card parameters manually  
Configure receiving card parameters as required.

Step 10 After the configuration is done, click **Send to Receiving Card**.

Step 11 Adjust the parameters until the display is normal and then click **Save**.

Step 12 (Optional) Click **Save to File** to back up the receiving card configuration file to your PC.

## 4.2 Loading the Configuration File with ViPlex Handy

Step 1 Save the receiving card configuration file to mobile phone.


Step 2 Refer to 6.1 [Taurus Login with ViPlex Handy \(Android and iOS\)](#) to log in to the Taurus.

Step 3 Click screen name to enter the **Screens** page.

Step 4 Choose Screen Settings > RV Card Configuration to enter the RV Card Configuration page.

Step 5 Select the receiving card configuration file and click **Send**.

## 5 Screen Configuration

- Step 1 Refer to [6.1 Taurus Login with ViPlex Handy \(Android and iOS\)](#) to log in to the Taurus.
- Step 2 Choose Settings > Select Mode.
- Step 3 Select Screen Configuration Mode and then click OK.
- Step 4 Select **Screens**.
- Step 5 Click screen name to enter the **Screens** page.
- Step 6 Select Screen Configuration.
- Step 7 Click  to configure screen information according to the actual conditions and then click **OK**.

XI'AN NOVASTAR TECH CO.,LTD



## 6 General Operations

The Taurus series products are designed with permanent Wi-Fi AP. This chapter takes Wi-Fi AP as an example to introduce how to log in to the Taurus.

### 6.1 Taurus Login with ViPlex Handy (Android and iOS)

#### Before You Begin



- Get the SSID and password of WiFi AP of the Taurus. The default SSID is “**AP+the last 8 digits**”. The default password is “**12345678**”.
- Get the password of the user “**admin**”. The default password of the user “**admin**” is “**123456**”.

#### Operating Steps

Step 1 Connect the WiFi AP of the Taurus products.

Step 2 Start ViPlex Handy.

ViPlex Handy automatically detects the Taurus and refreshes the screen list. Users can also swipe down to manually refresh the screen list.

-  : Denotes that the Taurus is online and you can log in to it. Go to [Step 3](#).
-  : Denotes that Taurus is offline and you cannot log into it.

Step 3 Tap **Connect** next the screen name.

Step 4 Enter the password for the "admin" user and then tap **Log In**.

After successful login,  is displayed. ViPlex Handy saves the account information automatically.

### 6.2 Taurus Login with ViPlex Express (Windows)

#### Before You Begin

- Get the SSID and password of WiFi AP of the Taurus. The default SSID is “**AP+the last 8 digits**”. The default password is “**12345678**”.
- Get the password of the user “**admin**”. The default password of the user “**admin**” is “**123456**”.




#### Operating Steps

Step 1 Connect the WiFi AP of the Taurus products.

Step 2 Start ViPlex Express.

Step 3 Click **Refresh** to refresh the screen list.

After detecting the Taurus, ViPlex Express will try to log in to the Taurus with the default account or the account used for last login.

-  : Denotes that the Taurus is online and you can log in to it. Go to [Step 4](#).
-  : Denotes the Taurus is offline and you cannot log in to it.
-  : Denotes logging into the Taurus is successful.

Step 4 Click **Connect** next the screen information.

Step 5 Enter the password for the "admin" user and then click **OK**.

After successful login, ViPlex Express saves the account information automatically.

XI'AN NOVASTAR TECH CO.,LTD

## 7 Caution

### FCC Caution

Any changes or modifications not expressly approved by the party responsible for compliance could void the user's authority to operate the equipment.

This device complies with part 15 of the FCC Rules. Operation is subject to the following two conditions: (1) This device may not cause harmful interference, and (2) this device must accept any interference received, including interference that may cause undesired operation.

Note: This equipment has been tested and found to comply with the limits for a Class A digital device, pursuant to part 15 of the FCC Rules. These limits are designed to provide reasonable protection against harmful interference when the equipment is operated in a commercial environment. This equipment generates, uses, and can radiate radio frequency energy and, if not installed and used in accordance with the instruction manual, may cause harmful interference to radio communications. Operation of this equipment in a residential area is likely to cause harmful interference in which case the user will be required to correct the interference at his own expense.

This equipment complies with FCC radiation exposure limits set forth for an uncontrolled environment. This equipment should be installed and operated with minimum distance 20cm between the radiator & your body.

This transmitter must not be co-located or operating in conjunction with any other antenna or transmitter.

### CE Caution

This equipment should be installed and operated with minimum distance 20cm between the radiator & your body.

### IC Warning

RSS-Gen Issue 3 December 2010" & "CNR-Gen 3e é dition D é cembre 2010:

- English:

This device complies with Industry Canada licence-exempt RSS standard(s).

Operation is subject to the following two conditions: (1) This device may not cause interference, and (2) This device must accept any interference, including interference that may cause undesired operation of the device.

- French:

Le pr é sent appareil est conforme aux CNR d'Industrie Canada applicables aux appareils radio exempts de licence. L'exploitation est autoris é e aux deux conditions suivantes:

(1) l'appareil ne doit pas produire de brouillage, et

(2) l'utilisateur de l'appareil doit accepter tout brouillage radio é lectrique subi, m ê me si le brouillage est susceptible d'en compromettre le fonctionnement.

### Replaceable Batteries

CAUTION: Risk of Explosion if Battery is replaced by an Incorrect Type. Dispose of Used Batteries According to the Instructions.

## Batteries Remplaçables

ATTENTION: Risque d'explosion si la Batterie est remplacé e par un Type Incorrect. Jeter les Batteries Us é es Conform é ment aux Instructions.

XI'AN NOVASTAR TECH CO.,LTD

**Copyright © 2020 Xi'an NovaStar Tech Co., Ltd. All Rights Reserved.**

No part of this document may be copied, reproduced, extracted or transmitted in any form or by any means without the prior written consent of Xi'an NovaStar Tech Co., Ltd.

**Trademark**

**NOVA STAR** is a trademark of Xi'an NovaStar Tech Co., Ltd.

**Statement**

Thank you for choosing NovaStar's product. This document is intended to help you understand and use the product. For accuracy and reliability, NovaStar may make improvements and/or changes to this document at any time and without notice. If you experience any problems in use or have any suggestions, please contact us via the contact information given in this document. We will do our best to solve any issues, as well as evaluate and implement any suggestions.

XI'AN NOVASTAR TECH CO., LTD

| [Official website](http://www.novastar.tech)  
| [www.novastar.tech](http://www.novastar.tech)

| [Technical support](mailto:support@novastar.tech)  
| [support@novastar.tech](mailto:support@novastar.tech)